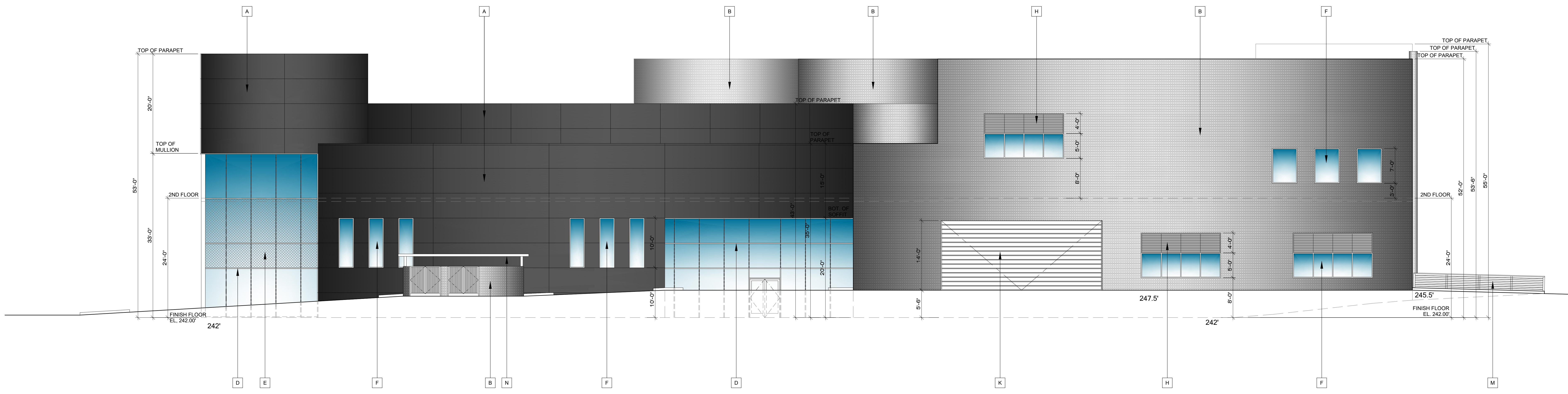


**PROPOSED EXTERIOR ELEVATIONS - SOUTH**








SCALE: 1/8" = 1'-0"



**PROPOSED EXTERIOR ELEVATIONS - EAST**

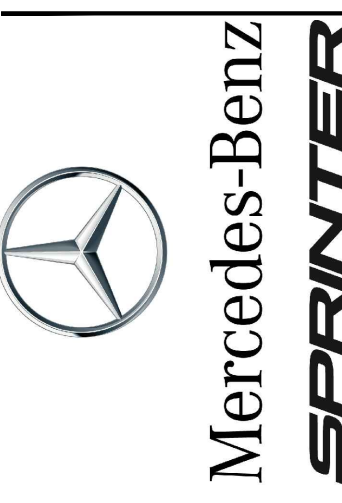
SCALE: 1/8" = 1'-0"

**EXTERIOR FINISHES LEGEND**

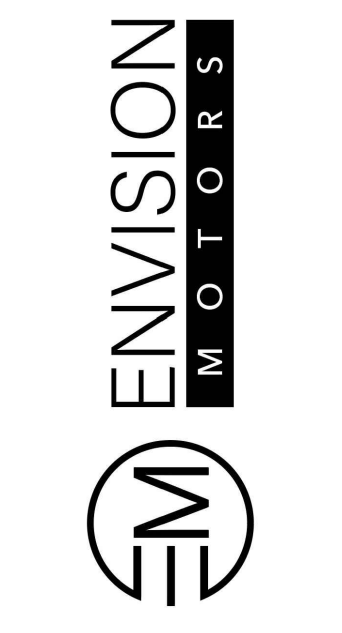
 WE01, ALPOLIC ALUMINUM COMPOSITE METAL PANELS, BLX BLACK 483-BLX-30 COLOR: SOLIDBLACK	 SG01, SPANDREL GLASS PANEL, OLDCASTLE BUILDING ENVELOPE, 1/4" CLEAR AN COLOR: MEDIUM GREY 2
 WE02, MECHANICAL SCREEN, CENTRIA CONCEPT 6 SERIES, CORRUGATED METAL PANEL 20 GA. COATED GALVANIZED STEEL COLOR: #9946 SILVERSMITH	 SG01, SPANDREL GLASS PANEL
 EPT01 PAINT SHERWIN WILLIAMS COLOR: #SW 6255, MORNING FOG	 CW02 CLEAR ANODIZED ALUMINUM STOREFRONT SYSTEM W/ GL01, PPG SOLARBAN 70XL, CLEAR INSULATING GLASS, SHGC: 0.32, U-VALUE 0.26
 GL01 PPG SOLARBAN 70XL, CLEAR INSULATING GLASS, SHGC: 0.32, U-VALUE 0.26	

**EXTERIOR ELEVATION KEYNOTES**

<b>A</b> WE01, ALPOLIC ALUMINUM COMPOSITE METAL PANELS, BLX BLACK 483-BLX-30 COLOR: SOLIDBLACK	<b>J</b> HIGH SPEED ROLL-UP DOOR (ALBANY RR3000) CLEAR ANODIZED, GLASS: CLEAR.
<b>B</b> WE02, MECHANICAL SCREEN, CENTRIA CONCEPT 6 SERIES, CORRUGATED METAL PANEL 20 GA. COATED GALVANIZED STEEL COLOR: #9946 SILVERSMITH	<b>K</b> STEEL ROLL-UP DOOR, PAINTED EPT01 SHERWIN WILLIAMS, #SW 6255, MORNING FOG
<b>C</b> HOLLOW METAL DOOR & FRAME, PAINTED EPT01 SHERWIN WILLIAMS, #SW 6255, MORNING FOG	<b>L</b> SECTIONAL ROLL-UP DOOR CLEAR ANODIZED, GLASS: CLEAR.
<b>D</b> CW01, CLEAR ANODIZED CURTAIN WALL SYSTEM AND CAPTURED HORIZONTAL MULLIONS W/ CLEAR INSULATED GLAZING SYSTEM, BUTTED JOINTS W/ W/ GL01, PPG SOLARBAN 70XL, CLEAR INSULATING GLASS, SHGC: 0.32, U-VALUE 0.26.	<b>M</b> STAINLESS STEEL CABLE GUARDRAIL
<b>E</b> SG01, SPANDREL GLASS PANEL	<b>N</b> COVERED TRASH ENCLOSURE
<b>F</b> CW02 CLEAR ANODIZED ALUMINUM STOREFRONT SYSTEM W/ GL01, PPG SOLARBAN 70XL, CLEAR INSULATING GLASS, SHGC: 0.32, U-VALUE 0.26	
<b>G</b> SIGNAGE PER MERCEDES BENZ SIGN VENDOR	
<b>H</b> STEEL LOUVER, PAINTED EPT01 (GLOSS FINISH)	



**SPRINTER ROSEVILLE**

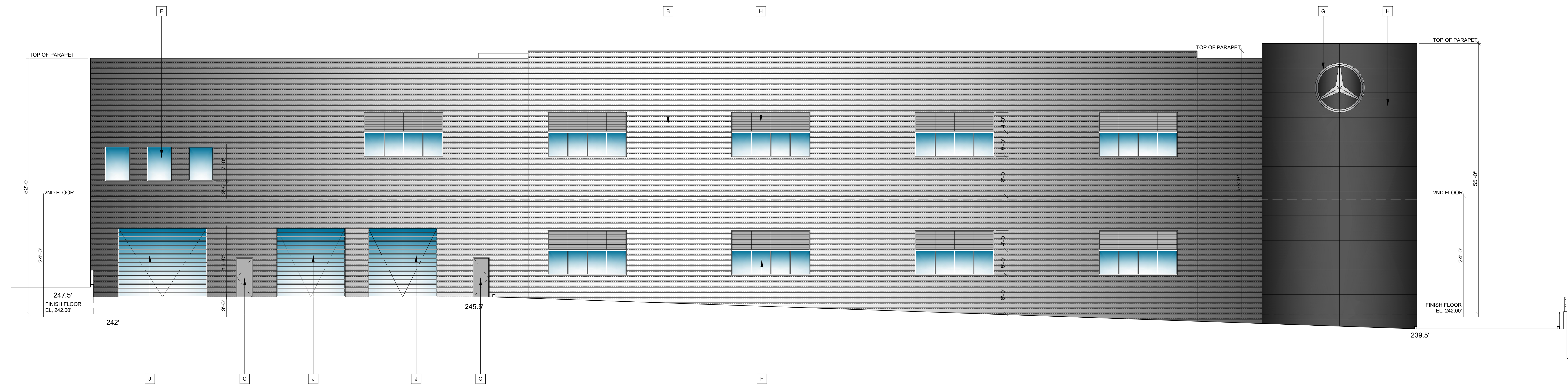


PROJECT NUMBER:

Mercedes-Benz  
**SPRINTER**

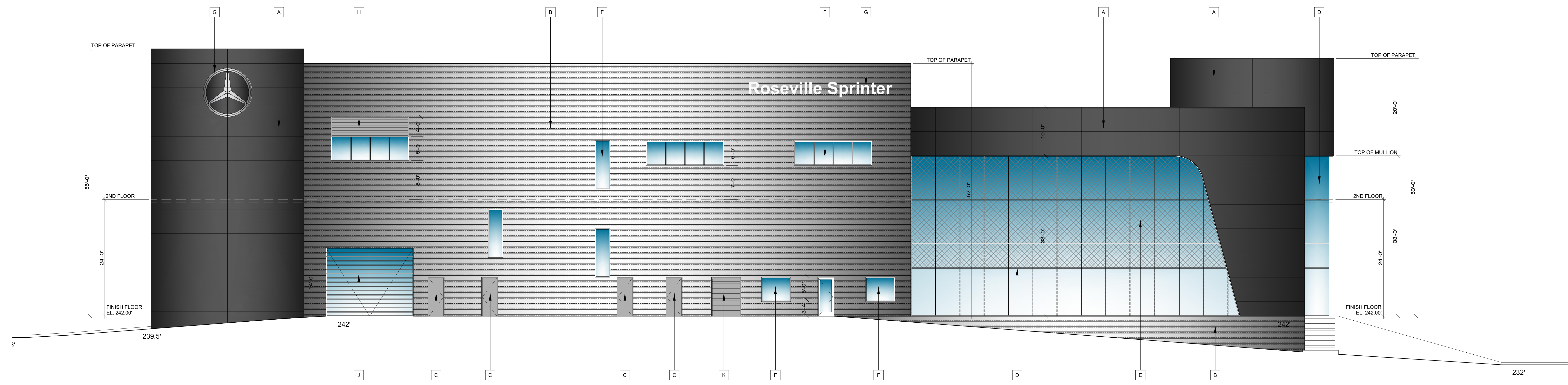
1513 EUREKA ROAD  
ROSEVILLE, CA 95661

**PROPOSED EXTERIOR ELEVATIONS**



**PROPOSED EXTERIOR ELEVATIONS - NORTH**

SCALE: 1/8" = 1'-0"



**PROPOSED EXTERIOR ELEVATIONS - WEST**

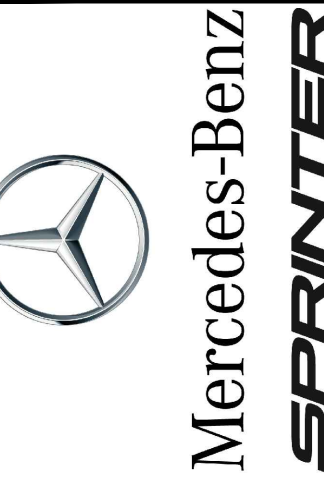
SCALE: 1/8" = 1'-0"

**EXTERIOR FINISHES LEGEND**

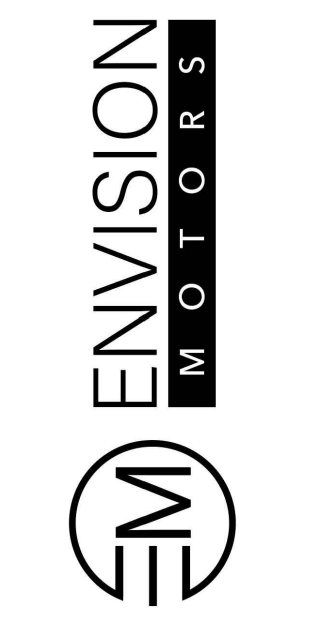
WE01, ALPOLIC ALUMINUM COMPOSITE METAL PANELS, BLX BLACK 483-BLX-30 COLOR: SOLIDBLACK	SG01, SPANDREL GLASS PANEL, OLDCASTLE BUILDING ENVELOPE, 1/4" CLEAR AN COLOR: MEDIUM GREY 2
WE02, MECHANICAL SCREEN, CENTRIA CONCEPT 6 SERIES, CORRUGATED METAL PANEL 20 GA. COATED GALVANIZED STEEL COLOR: #9946 SILVERSMITH	
EPT01 PAINT SHERWIN WILLIAMS COLOR: #SW 6255, MORNING FOG	
GL01 PPG SOLARBAN 70XL, CLEAR INSULATING GLASS, SHGC. 0.32, U-VALUE 0.26.	

**EXTERIOR ELEVATION KEYNOTES**

<b>A</b> WE01, ALPOLIC ALUMINUM COMPOSITE METAL PANELS, BLX BLACK 483-BLX-30 COLOR: SOLIDBLACK	<b>J</b> HIGH SPEED ROLL-UP DOOR (ALBANY RR3000) CLEAR ANODIZED, GLASS: CLEAR.
<b>B</b> WE02, MECHANICAL SCREEN, CENTRIA CONCEPT 6 SERIES, CORRUGATED METAL PANEL 20 GA. COATED GALVANIZED STEEL COLOR: #9946 SILVERSMITH	<b>K</b> STEEL ROLL-UP DOOR, PAINTED EPT01 SHERWIN WILLIAMS, #SW 6255, MORNING FOG
<b>C</b> HOLLOW METAL DOOR & FRAME, PAINTED EPT01 SHERWIN WILLIAMS, #SW 6255, MORNING FOG	<b>L</b> SECTIONAL ROLL-UP DOOR CLEAR ANODIZED, GLASS: CLEAR.
<b>D</b> CW01, CLEAR ANODIZED CURTAIN WALL SYSTEM AND CAPTURED HORIZONTAL MULLIONS W/ CLEAR INSULATED GLAZING SYSTEM. BUTTED JOINTS W/ W/ GL01, PPG SOLARBAN 70XL, CLEAR INSULATING GLASS, SHGC. 0.32, U-VALUE 0.26.	<b>M</b> STAINLESS STEEL CABLE GUARDRAIL
<b>E</b> SG01, SPANDREL GLASS PANEL	<b>N</b> COVERED TRASH ENCLOSURE
<b>F</b> CW02 CLEAR ANODIZED ALUMINUM STOREFRONT SYSTEM W/ GL01, PPG SOLARBAN 70XL, CLEAR INSULATING GLASS, SHGC. 0.32, U-VALUE 0.26.	
<b>G</b> SIGNAGE PER MERCEDES BENZ SIGN VENDOR	
<b>H</b> STEEL LOUVER, PAINTED EPT01 (GLOSS FINISH)	

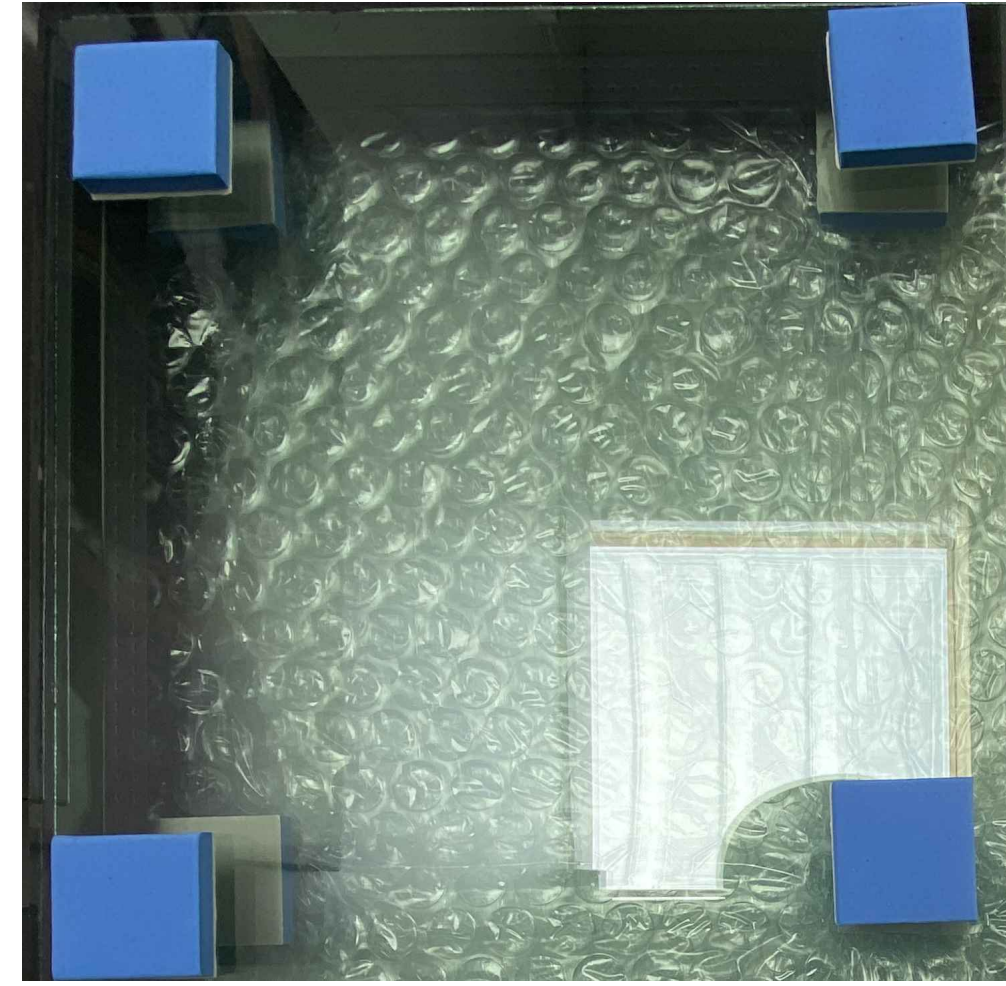


**SPRINTER ROSEVILLE**  
1513 EUREKA ROAD  
ROSEVILLE, CA 95661



PROJECT NUMBER:

**PROPOSED EXTERIOR ELEVATIONS**



GL01



EPT01



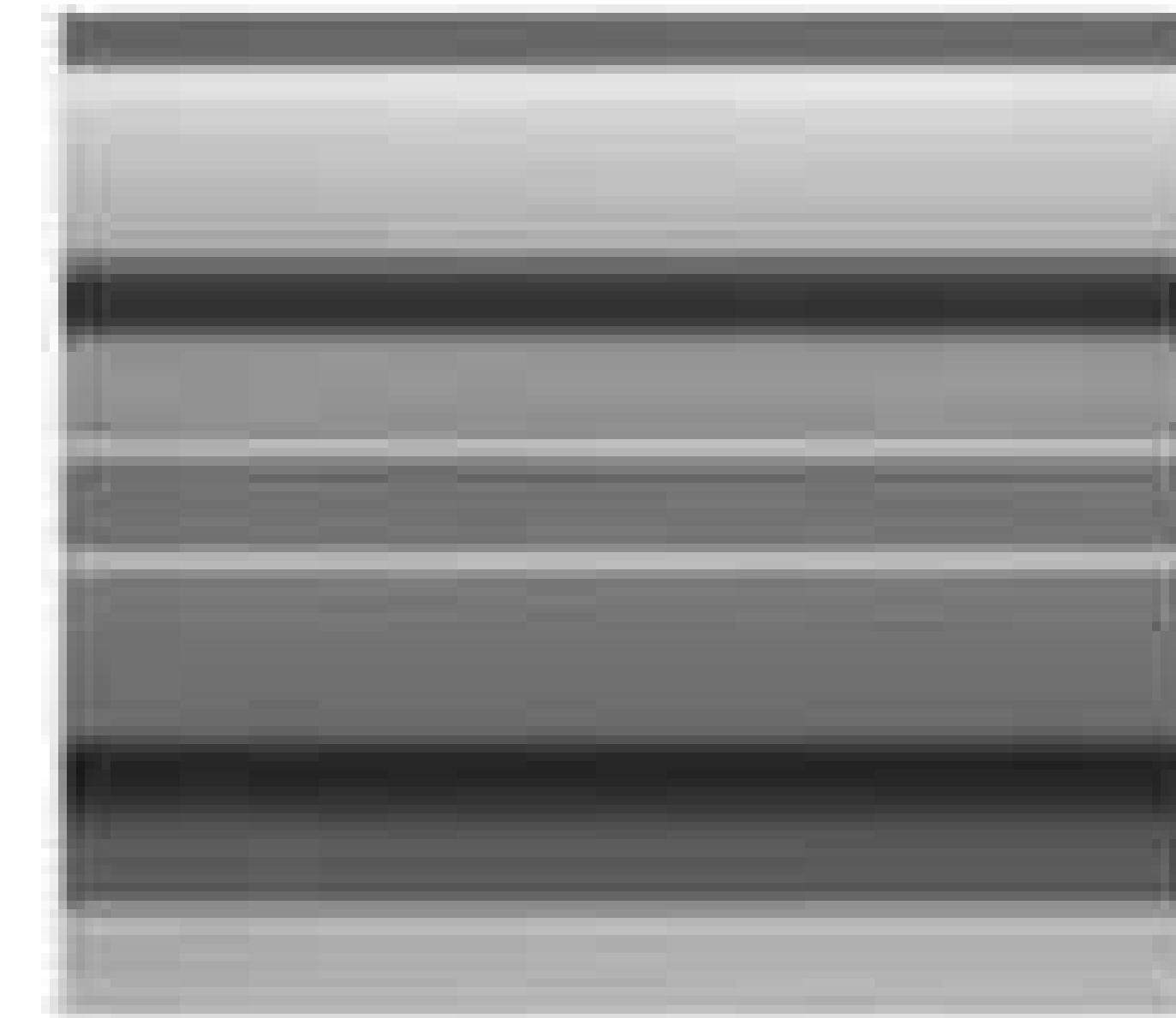
WE01



SG01



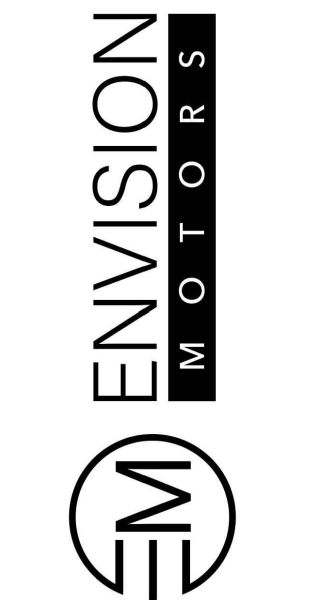
CW01 & CW02



WE02



SPRINTER  
ROSEVILLE  
1513 EUREKA ROAD  
ROSEVILLE, CA 95661



FINISH SCHEDULE

PROJECT NUMBER:

EXTERIOR MATERIALS SCHEDULE

EXTERIOR FINISHES	CODE	MATERIAL	MANUFACTURER / SUPPLIER	DESCRIPTION		LOCATION	ADDITIONAL INFORMATION
				PRODUCT / SERIES	COLOR		
	WE01	ALUMINUM COMPOSITE METAL PANEL	ALPOLIC		BLX BLACK 483-BLX-30 SOLID BLACK	PER PLAN	EXTERIOR FACADE
	WE02	CORRUGATED METAL PANEL	CENTRIA	CONCEPT 6 SERIES	20 GA COATED GALV STEEL #9946 SILVERSMITH	PER PLAN	SERVICE BUILDING FACADE. STEEL TUBE FRAME TO BE PAINTED TO MATCH #9946 SILVERSMITH
	EPT01	EXTERIOR PAINT	SHERWIN WILLIAMS		SW 6255 MORNING FOG		SERVICE BUILDING FACADE.
	CW01	CURTAIN WALL	ARCADIA	CURTAIN WALL T500 OPG3000 (THERMAL)	FRAME: CLEAR ANODIZED	2 1/4" x 10" FOR 1" GLASS	EXTERIOR GLAZING, GREATER THAN 16'-0" HIGH
	CW02	CURTAIN WALL	ARCADIA	CURTAIN WALL T500 OPG6000 (THERMAL)	FRAME: CLEAR ANODIZED	2 1/4" x 6" FOR 1" GLASS	EXTERIOR GLAZING, LESS THAN 16'-0" HIGH
	GL01	GLAZING	OLDCASTLE BUILDING ENVELOPE	PPG SOLARBAN 70XL SHGC: 0.32, U-VALUE 0.26.	CLEAR INSULATING GLASS	1/2"	EXTERIOR GLAZING
	SG01	GLAZING	OLDCASTLE BUILDING ENVELOPE	SPANDREL GLASS PANEL	MEDIUM GREY 2	1/4" CLEAR AN	EXTERIOR GLAZING



**FROM ROCKY RIDGE ROAD**



**FROM EUREKA ROAD**



**FROM ROCKY RIDGE ROAD**



**FROM EUREKA ROAD**



1513 EUREKA ROAD  
ROSEVILLE, CA 95661



**RENDERINGS**

PROJECT NUMBER: